

SECTION 16, T.6N., R.1E., S.L.B. & M.

IN WEBER COUNTY

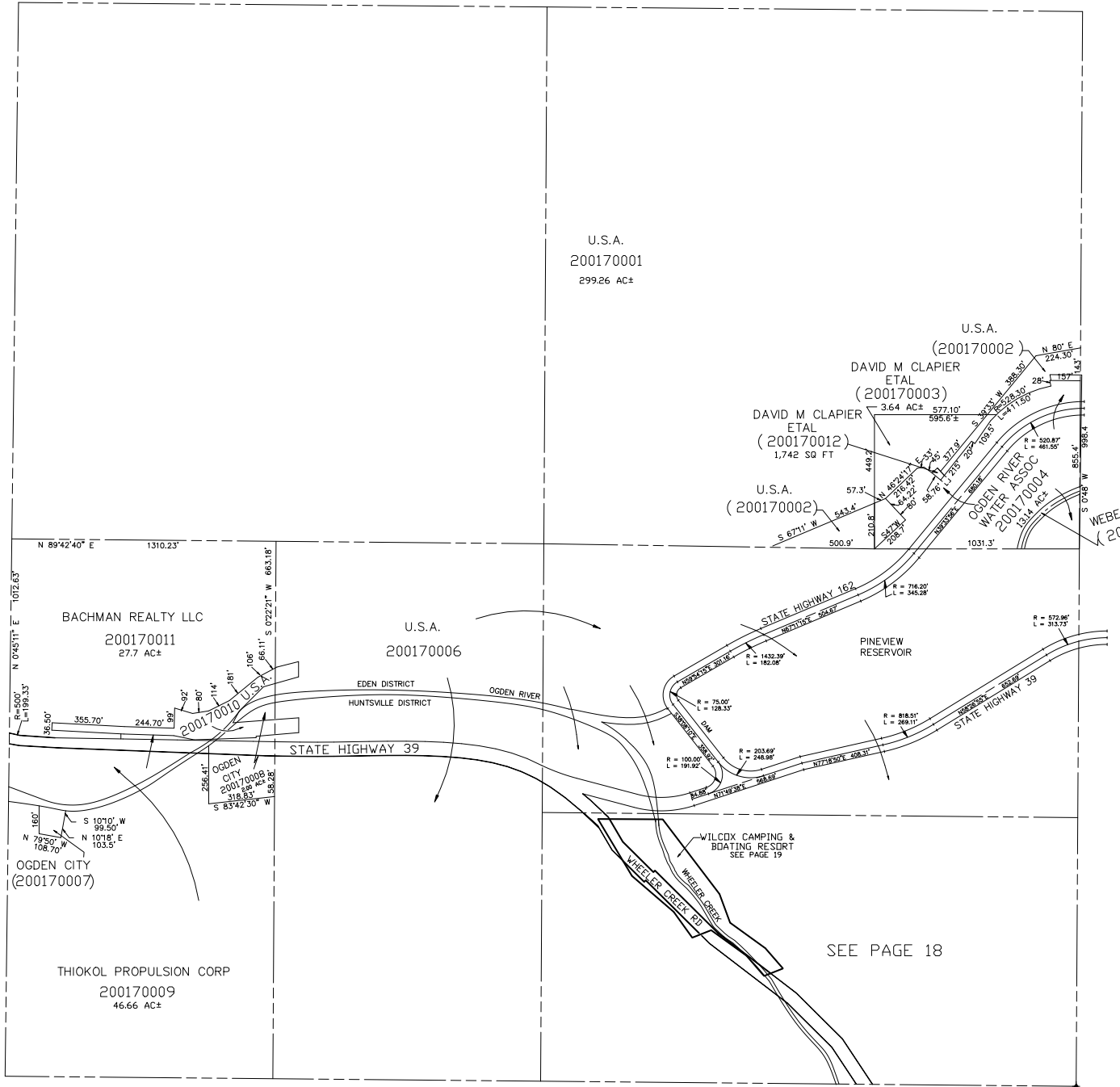
SCALE 1" = 400'

TAXING UNIT: 317

SEE PAGE 4

SEE PAGE 20

SEE PAGE 16



NOTE: ALL HIGHWAY DATA ACCORDING TO THE U.S. DEPT. OF INTERIOR BUREAU OF RECLAMATION, PINEVIEW DAM ENLARGEMENT OF HIGHWAYS 162 & 39 FROM STA. 26+27.20 TO 98+24.73 FOR HIGHWAY 162. STA. 26+27.20 TO STA. 65+27.82 FOR HIGHWAY 39

SEE PAGE 34